

AlertSite – API Monitoring

Your business depends on its applications; but your applications are dependent on the web services and components they connect to. Whether you are a provider of APIs, a consumer of them or more than likely both; if you're not monitoring your APIs you're not monitoring your applications.

No one knows APIs better than SmartBear Software, creators of SoapUI, & Ready! API AlertSite API Monitoring is part of the AlertSite platform. A single platform to proactively monitor APIs, mobile, web and SaaS applications, detect problems in end user experience and alert you to them.

Monitor in Production

Your users don't live in the cloud. In order to ensure that APIs are performing well for end users - monitor from where end users are located in environments that match theirs.

Fast and Easy

Reuse the same functional tests created in Ready! API, SoapUI or SoapUI NG Pro. In a couple clicks you can be monitoring in production. Using your existing functional tests means you monitor actual functionality.

Monitor in Your Test Environment

Baseline the performance of your APIs in the test environment, when you move to production, and conditions change, you will understand the effects.

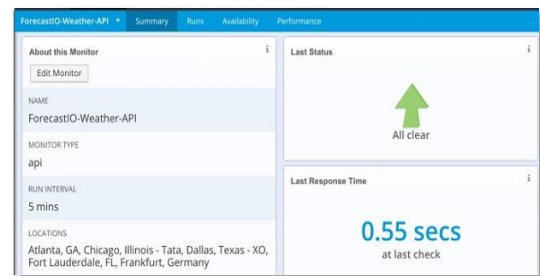
Reduce MTTR

The fastest most accurate alerting on the planet means you can find problems before your end users are impacted. Performance metrics including network and transaction response times as well as functional assertions such as keyword validation help you to fix the problem

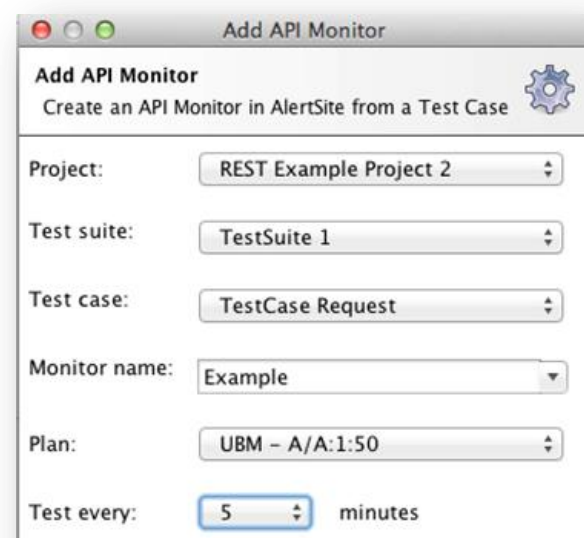
† Integrated directly with Ready! API

Understand 3rd party Impact

Most likely you not only create API's but consume them. Services such as location or mapping and SaaS business services are common third party APIs that you might use. The only way to ensure the performance of APIs you consume is to monitor them.



Monitor in production



AlertSite API monitoring-ensure the API is serving the correct payload, and responding within the required time

Features	Benefits
Integrated with Ready! API, SoapUI and SoapUI NG Pro	Reuse functional tests saving time. Monitor directly from the Ready! API console. Start monitoring in production and resolve issues quickly.
Performance Monitoring <ul style="list-style-type: none">• Response times for each test step/request• Assertions for Payload, HTTP codes, key word validation etc.	Ensure schema compliance. See if APIs are responding fast enough and with the correct response ensuring web application performance.
Authentication Monitoring <ul style="list-style-type: none">• Detect SSL errors	Make sure Certs are working properly in production.
Basic Monitoring Endpoint monitoring including: <ul style="list-style-type: none">• Network connectivity errors• Socket-based errors• Http protocol errors	Keep tabs on application delivery understand if there is an issue with infrastructure or with the API. Simply enter the API's URL to start monitoring.
Global independent monitoring network <ul style="list-style-type: none">• Monitor 24X7• 80+ locations across the globe	External production environments are both varied and dynamic- end users don't live in the cloud. Global monitoring from ISP's and local providers means that you can detect conditions that affect performance for actual end users.
On premises monitoring behind the firewall	Internal applications with specific security requirements and specific corporate locations can be monitored in the same manner using our on premise solution.

SMARTBEAR

About SmartBear Software

As the leader in software quality tools for the connected world, SmartBear supports more than three million software professionals and over 25,000 organizations in 194 countries that use its products to build and deliver the world's greatest applications. With today's applications deploying on mobile, Web, desktop, Internet of Things (IoT) or even embedded computing platforms, the connected nature of these applications through public and private APIs presents a unique set of challenges for developers, testers and operations teams. SmartBear's software quality tools assist with code review, functional and load testing, API readiness as well as performance monitoring of these modern applications. For more information, visit: <http://www.smartbear.com>, or for the SmartBear community, go to: Facebook, Twitter, LinkedIn or Google+.